

AVU41D82



Wine Cellar service

Built-under counter

GENERAL INFORMATION

Number of bottles : 29

Number of zones : 2

Adjustable temperature range : 5-20°C

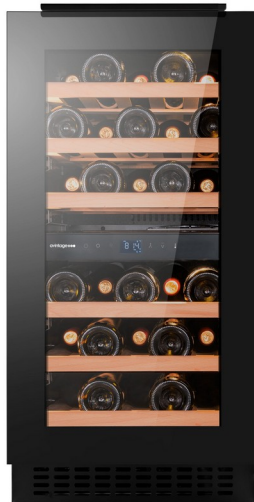
Noise level : 37dB

Energy class : F

Climate class : ST (16-38)

Vinotag compatible : Yes

Wifi connection : yes



Product description

Built-In Under-Counter Wine Cellar: 40 cm Width and 72 cm Door for Elegance and Ease

This 40 cm width built-in under-counter wine cellar with a **discreet handle and removable ventilation grille** is designed to simplify installation and showcase your bottles.

From a design perspective, its adjustable white lighting elegantly highlights your bottles. You can set the **light intensity to 25%, 50%, 75%, or 100%**, depending on the desired ambiance.

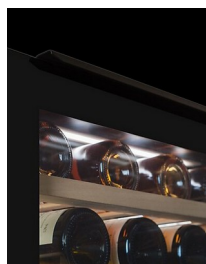
Additional features include **telescopic rail** shelves for smooth and secure access, as well as **smart connectivity** to remotely control temperature, lighting, and alarms.

This is far more than just a wine cellar: it is the perfect combination of technology, comfort, and refinement, ensuring your wines are stored and displayed to meet your highest standards.



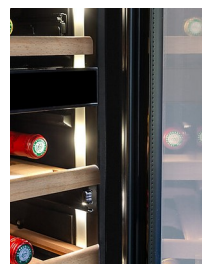
REMOTE CONTROL

Thanks to a wifi connection manage remotely temperature and lighting



DISCREET HANDLES UNDER THE WORKTOP

The discreet handle to blend perfectly into any kitchen



DIMMABLE LED LIGHTING

A choice of 3 colors available AMBER / WARM WHITE / COOL WHITE Adjustable intensity



TELESCOPIC RAILS

This model is equipped with shelves on telescopic rails

AVU41D82

EAN-13 - 3595320108231

Capacity and Temperature

- **Number of bottles: 29**
 - Upper zone : 15
 - Lower zone : 14
- **Adjustable temperature: 5-20°C**
 - Upper zone : 5-12°C
 - Lower zone : 12-20°C

Door

Door color : black windows effect
Door glass color : Grey
Number of glass layers : 3
Anti-UV : Yes
Low-e glass : Yes
Tempered glass : Yes
Lock : No
Reversible door : Yes
Handle type : Discreet handle under counter

Security

Alarm : Door, Temperature, Charcoal filter
Child lock : Yes
Temperature memory : Yes

Logistic

Net dimensions (WxDxH): 39.5 x 57.0 x 81.5
Gross dimensions (WxDxH): 45.1 x 63.2 x 87.2
Net weight (kg) : 40.0
Gross weight (kg) : 42.0

Technical Data

Energy class : F
Annual energy (KWh/a) : 89
Climate class : ST (16-38)
Noise level : 37dB / C
Energy Efficiency Index : 110 %
Power input : 200.00 W
Voltage : 220 V
Length of power cable : 150 cm
Plug Type : E type
Type of gas : R600a
Gas charge : 22 g
Mainly recyclable product : Yes
Type of compressor : Inverter
Main cooling system : Air moving system
Anti-vibration system : Yes
Adjustable feet : 4 / 9.5 cm

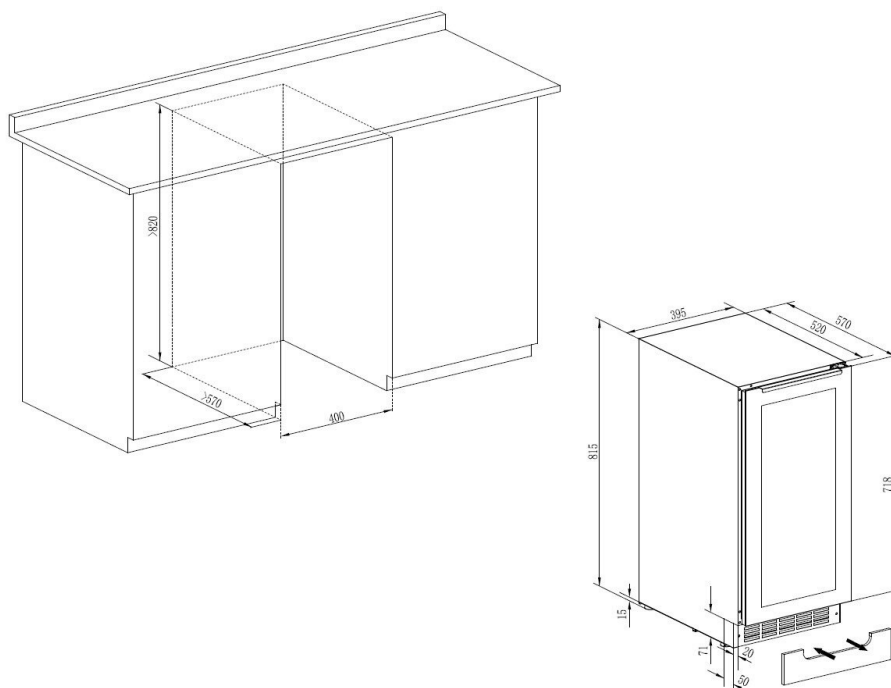
Light

Light source : LED
Light color(s) : White
Dimmable light : yes
Light switch : yes
Permanent light option : Yes

Qty per 20' : 108
Qty per 40' : 186
Qty per 40 HC : 270
Customs code: 84185090

AVU41D82

EAN-13 - 3595320108231



Accessories

- 5 shelves, wooden, sliding, rails
- 1 charcoal filter, (FILTRE7)

Compatible accessories references : FILTRE7

Built-in information

Built-in dimensions (WxDxH) : 40.00 x 57.00 x 82.00

Plumbing passage : No

Recessed plinth : Yes / 2.00

Plinth height : 8.00

Removable plinth : Yes / 5.00

Installation warning : This product is equipped with a front ventilation system. Follow the installation instructions to ensure proper operation of the unit.